



Il pressostato permette di trasformare un segnale pneumatico in un segnale elettrico.

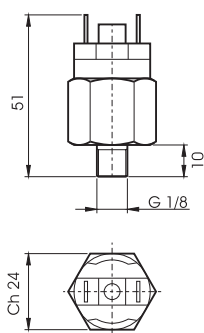
The pressure switch allows to change the signal from pneumatic into electric

DATI TECNICI / TECHNICAL DATA

Fluido / Fluid	aria con o senza lubrificazione / lubricated or non lubricated air
Temperatura di esercizio / Temperature range	-10 c° - +60c
Campo di taratura / setting range	1 - 10bar
Tolleranza a 20 C° / Tolerance at 20 C°	0,5bar
Tensione massima / Max tension	48V AC

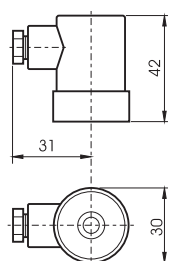
MATERIALI / MATERIALS

Corpo / Body	Ottone OT58 / Brass OT58
Membrana / Diaphragm	Gomma / Rubber
Contatti / Electrical contacts	Argentati / Silver plated



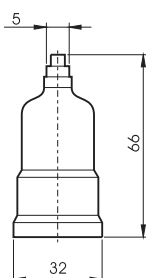
CODE

PR211	NC
PR212	NA / NO



CAPPUCCIO 90° / CAP 90°

CODE
TX0017



CAPPUCCIO IN LINEA / IN LINE CAP

CODE
TX0018