



CT series round cylinders allows the possibility to combine bigger bores, while keeping dimensions smaller than a square cylinder. Both ends of CT's round cylinders are fixed to the tubes thanks to a rolling process. They are available in different versions from diameter 32 to 63 mm: single or double acting, magnetic, cushioned. Fixing accessories are available and special executions can be carried out.

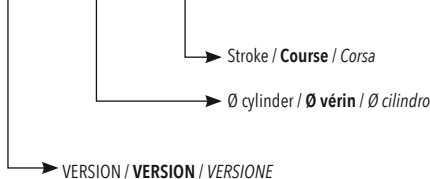
**La tête et le fond du vérin rond CIC sont sertis sur le tube et sont disponibles dans différentes versions: simple et double effet, magnétique, amorti. Les accessoires de fixations sont nombreux et il est possible d'avoir des exécutions spéciales sur demande .**

*I cilindri rotondi della serie CT, consentono la possibilità di combinare diametri più grande, mantenendo ingombri più contenuti dei cilindri a sezione quadrata. Le testate dei cilindri tondi di Air Work sono fissate alla camicia mediante rullatura e sono realizzabili in differenti versioni dal diametro 32 al 63 mm: semplice e doppio effetto, magnetici, ammortizzati.*

*Sono inoltre disponibili i relativi accessori di fissaggio ed esecuzioni speciali a disegno.*

ORDERING CODE / CODIFICATION / CHIAVE DI CODIFICA

CT001000000



- 01= Double acting magnetic / **Double effet magnétique** / Doppio effetto magnetico
- 02= Double acting not magnetic / **Double effet non magnétique** / Doppio effetto non magnetico
- 03= Double acting through rod magnetic / **Double effet tige traversante magnétique** / Doppio effetto stelo passante magnetico
- 04= Double acting through rod not magnetic / **Double effet tige traversante non magnétique** / Doppio effetto stelo passante non magnetico
- 05= Double acting with cushioned magnetic / **Double effet amorti magnétique** / Doppio effetto con ammortizzo magnetico
- 06= Double acting with cushioned not magnetic / **Double effet amorti non magnétique** / Doppio effetto con ammortizzo non magnetico
- 07= Double acting through rod magnetic / **Double effet tige traversante amorti magnétique** / Doppio effetto stelo passante con ammortizzo magnetico
- 08= Double acting through rod not magnetic / **Double effet tige traversante amorti non magnétique** / Doppio effetto stelo passante con amm. non mag.
- 09= Single acting front spring magnetic / **Simple effet tige rentrée magnétique** / Semplice effetto molla anteriore magnetico
- 10= Single acting front spring not magnetic / **Simple effet tige rentrée non magnétique** / Semplice effetto molla anteriore non magnetico
- 11= Single acting rear spring magnetic / **Simple effet tige sortie magnétique** / Semplice effetto molla posteriore magnetico
- 12= Single acting rear spring not magnetic / **Simple effet tige sortie non magnétique** / Semplice effetto molla posteriore non magnetico



On request Atex version:  
**Sur demande version Atex:**  
Su richiesta versione Atex:  
Ex II 2G Ex h II c T5 Gb  
Ex II 2D Ex h III c T100°C Db

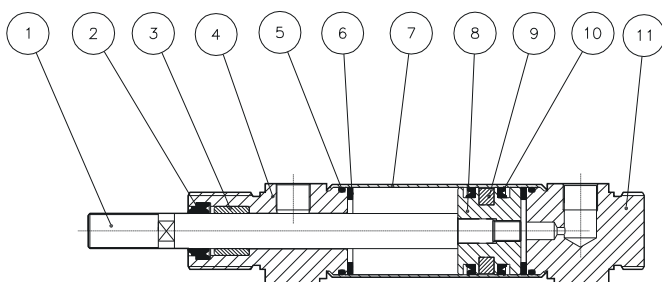
STANDARD STROKES / COURSE STANDARD / CORSE STANDARD

Double acting / <b>Double effet</b> / Doppio effetto	Single acting / <b>Simple effet</b> / Semplice effetto
<b>Ø32</b> mm 25-50-80-100-125-160-200-250-320-400-500	<b>Ø32</b> mm 10-25-50
<b>Ø40</b> mm 25-50-80-100-125-160-200-250-320-400-500	<b>Ø40</b> mm 10-25-50
<b>Ø50</b> mm 25-50-80-100-125-160-200-250-320-400-500	<b>Ø50</b> mm 10-25-50
<b>Ø63</b> mm 25-50-80-100-125-160-200-250-320-400-500	<b>Ø63</b> mm 10-25-50

TECHNICAL DATA / DONNÉES TECHNIQUES / DATI TECNICI

Fluid / <b>Fluide</b> / Fluido	Lubricated or non lubricated air / <b>Air lubrifié ou non lubrifié</b> / Aria con o senza lubrificazione
Operating temperature range / <b>Température d'utilisation</b> / Temp. di esercizio	-20°C / +80°C
Max operating pressure / <b>Pression maximum</b> / Pressione massima di esercizio	10 bar
Force / <b>Force</b> / Forza sviluppata	Technical informations page / <b>Page informations techniques</b> / Pagina dati tecnici
Air consumption / <b>Consommation d'air</b> / Consumo aria	Technical informations page / <b>Page informations techniques</b> / Pagina dati tecnici

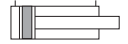
COMPONENTS / COMPOSANTS / COMPONENTI



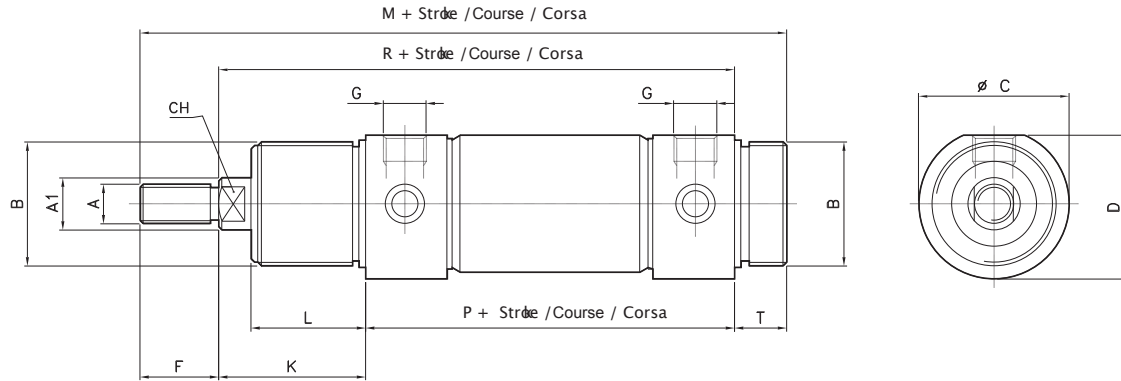
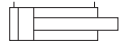
N.	DESCRIPTION / DESCRIPTION / DESCRIZIONE	MATERIAL / MATIÈRE / MATERIALE
1	rod / <b>tige</b> / stelo	stainless steel AISI 303 / <b>acier AISI 303</b> / acciaio inox 303
2	rod seal / <b>joints tige</b> / guarnizione stelo	polyurethane / <b>polyuréthane</b> / poliuretano
3	guide bush / <b>bague guidage</b> / bussola guida	bronze / <b>bronze</b> / bronzo
4	front cap / <b>fond antérieur</b> / testata anteriore	aluminium / <b>aluminium</b> / alluminio
5	o-ring / <b>joint torique</b>	NBR
6	bumper / <b>butoir</b> / paracolpo	NBR
7	tube / <b>tube</b> / tube	stainless steel AISI 304 / <b>acier AISI 304</b> / acciaio inox 304
8	piston / <b>piston</b> / pistone	brass / <b>laiton</b> / ottone
9	magnet / <b>aimant</b> / magnete	plastroferrite
10	seal piston / <b>joints piston</b> / guarnizione pist.	polyurethane / <b>polyuréthane</b> / poliuretano
11	rear cap / <b>fond postérieur</b> / testata post.	aluminium / <b>aluminium</b> / alluminio

Double acting  
**Double effet**  
Doppio effetto

CODE: CT011.Ø.mm



CODE: CT021.Ø.mm



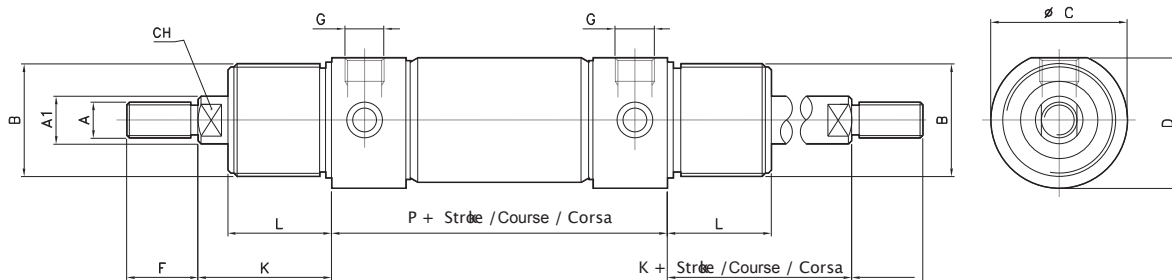
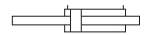
Ø	A	A1	B	C	D	F	G	K	L	M	P	R	T	CH
32	M10x1.25	12	M30x1.5	38	36.5	20	1/8" GAS	38	30	168	96	134	14	10
40	M12x1.25	16	M38x1.5	46	44	24	1/4" GAS	45	35	198	113	158	16	12
50	M16x1.5	20	M45x1.5	57	55	32	1/4" GAS	50	38	220	120	170	18	16
63	M16x1.5	20	M45x1.5	70	67.5	32	3/8" GAS	50	38	224	124	174	18	16

Double acting through rod  
**Double effet tige traversante**  
Doppio effetto stelo passante

CODE: CT031.Ø.mm



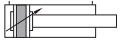
CODE: CT041.Ø.mm



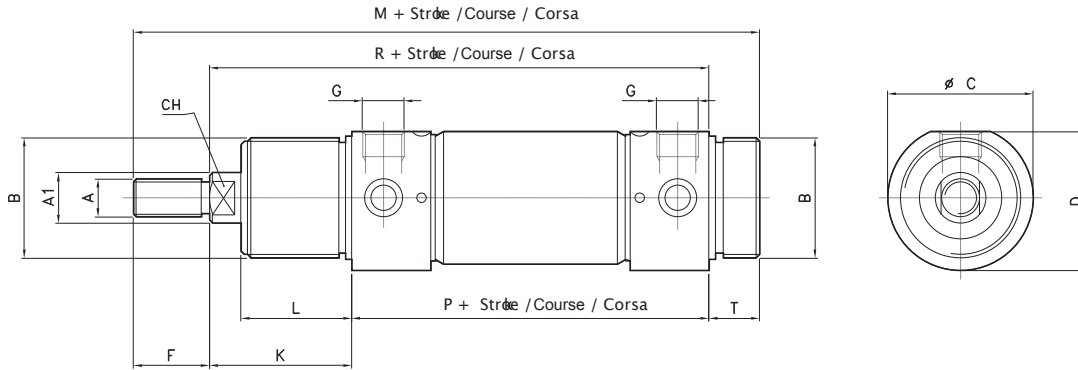
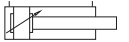
Ø	A	A1	B	C	D	F	G	K	L	P	CH
32	M10x1.25	12	M30x1.5	38	36.5	20	1/8" GAS	38	30	96	10
40	M12x1.25	16	M38x1.5	46	44	24	1/4" GAS	45	35	113	12
50	M16x1.5	20	M45x1.5	57	55	32	1/4" GAS	50	38	120	16
63	M16x1.5	20	M45x1.5	70	67.5	32	3/8" GAS	50	38	124	16

Double acting with cushioning  
**Double effet amorti**  
*Doppio effetto con ammortizzo*

CODE: CT051.Ø.mm



CODE: CT061.Ø.mm



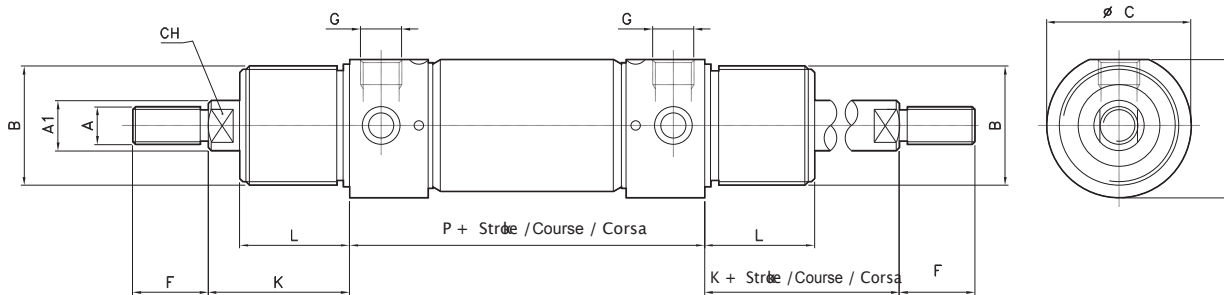
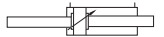
Ø	A	A1	B	C	D	F	G	K	L	M	P	R	T	CH
32	M10x1.25	12	M30x1.5	38	36.5	20	1/8" GAS	38	30	168	96	134	14	10
40	M12x1.25	16	M38x1.5	46	44	24	1/4" GAS	45	35	198	113	158	16	12
50	M16x1.5	20	M45x1.5	57	55	32	1/4" GAS	50	38	220	120	170	18	16
63	M16x1.5	20	M45x1.5	70	67.5	32	3/8" GAS	50	38	224	124	174	18	16

Double acting through rod with cushioning  
**Double effet tige traversante amorti**  
*Doppio effetto asta passante con ammortizzo*

CODE: CT071.Ø.mm



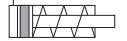
CODE: CT081.Ø.mm



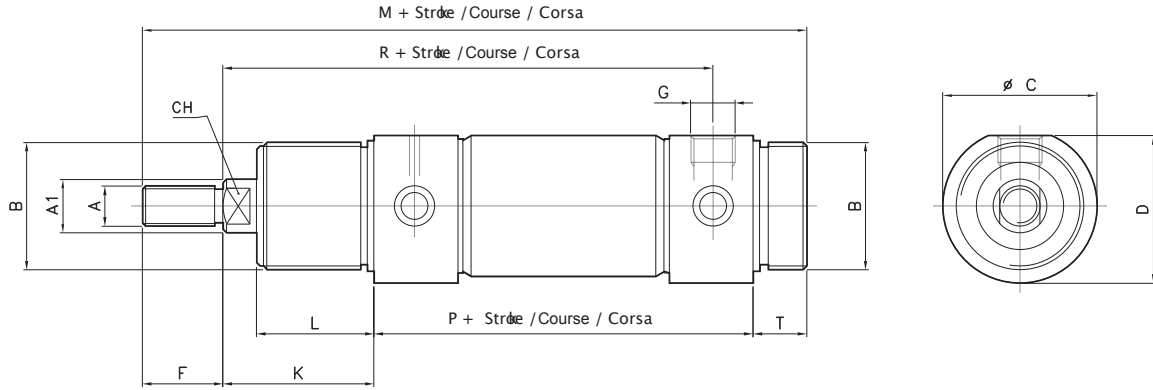
Ø	A	A1	B	C	D	F	G	K	L	P	CH
32	M10x1.25	12	M30x1.5	38	36.5	20	1/8" GAS	38	30	96	10
40	M12x1.25	16	M38x1.5	46	44	24	1/4" GAS	45	35	113	12
50	M16x1.5	20	M45x1.5	57	55	32	1/4" GAS	50	38	120	16
63	M16x1.5	20	M45x1.5	70	67.5	32	3/8" GAS	50	38	124	16

Single acting front spring  
**Simple effet ressort avant**  
 Semplice effetto molla anteriore

CODE: CT091.Ø.mm



CODE: CT101.Ø.mm



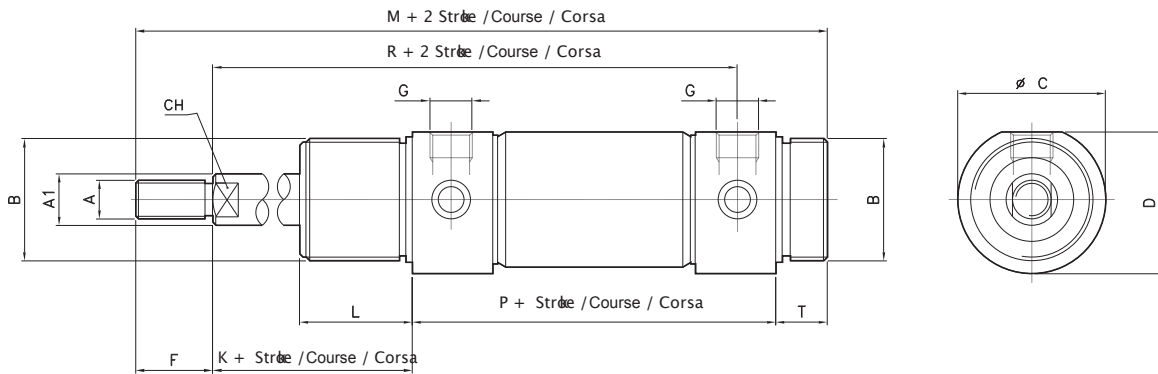
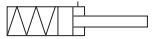
Ø	A	A1	B	C	D	F	G	K	L	M	P	R	T	CH
32	M10x1.25	12	M30x1.5	38	36.5	20	1/8" GAS	38	30	168	96	134	14	10
40	M12x1.25	16	M38x1.5	46	44	24	1/4" GAS	45	35	198	113	158	16	12
50	M16x1.5	20	M45x1.5	57	55	32	1/4" GAS	50	38	220	120	170	18	16
63	M16x1.5	20	M45x1.5	70	67.5	32	3/8" GAS	50	38	224	124	174	18	16

Single acting rear spring  
**Simple effet ressort arrière**  
 Semplice effetto molla posteriore

CODE: CT111.Ø.mm



CODE: CT121.Ø.mm

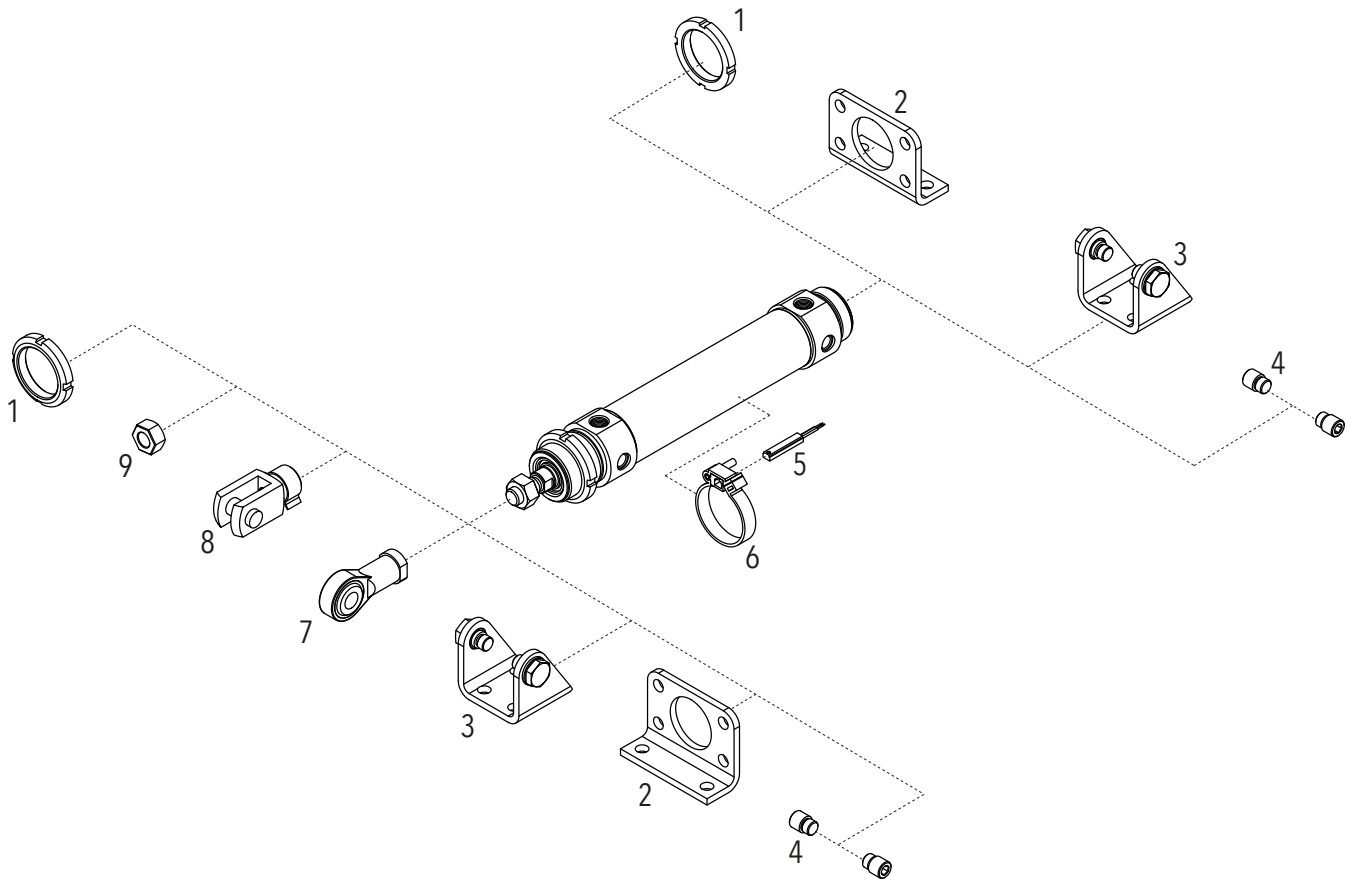


Ø	A	A1	B	C	D	F	G	K	L	M	P	R	T	CH
32	M10x1.25	12	M30x1.5	38	36.5	20	1/8" GAS	38	30	168	96	125	14	10
40	M12x1.25	16	M38x1.5	46	44	24	1/4" GAS	45	35	198	113	146	16	12
50	M16x1.5	20	M45x1.5	57	55	32	1/4" GAS	50	38	220	120	158	18	16
63	M16x1.5	20	M45x1.5	70	67.5	32	3/8" GAS	50	38	224	124	163	18	16

MOUNTING PARTS / ACCESSOIRES DE MONTAGE / ACCESSORI DI FISSAGGIO

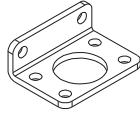
Actuators / Actionneurs / Attuatori

ROUND CYLINDERS / VERINS ROUNDS / CILINDRI TONDI

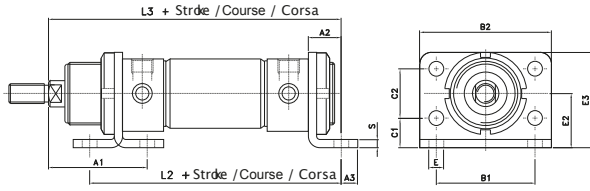


POS.	DESCRIPTION	CODE
1	Nut / <b>Ecrou de nez</b> / Ghiera	AR4205 Ø
2	Pedestal / <b>Equerre</b> / Piedino	AR4202 Ø
3	Female hinge / <b>Charniere femelle</b> / Cerniera femmina	AR4203 Ø
4	Pivots for hinge / <b>Axe pour articulation</b> / Perni per cerniera	AR4204 Ø
5	T switch / <b>Capteur en t</b> / Sensore a T	AR4023...
6	Adaptor for T switch / <b>Adaptateur capteur en T</b> / Adattatore sensore a T	AR4199 Ø
7	Rod ends / <b>Chape de tige rotulee</b> / Testa a snodo	AR4066...
8	Yoke with clips / <b>Chape de tige</b> / Forcella con clips	AR4067...
9	Nut for rod / <b>Ecrou pour tige</b> / Dado per stelo	DAD...

PEDESTAL  
**EQUERRE**  
 PIEDINO

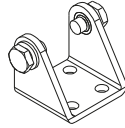


CODE MATERIAL / MATIÈRE / MATERIALE  
**AR4202 Ø** Steel / Acier / Acciaio

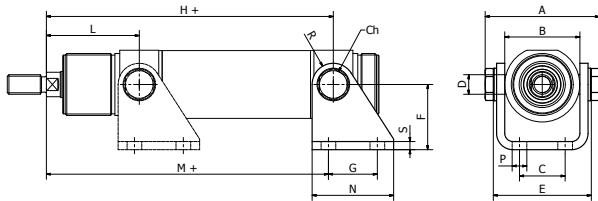


Ø	A1	A2	A3	B1	B2	C1	C2	E	E2	E3	L2	L3	S
32	48	14	7	52	66	14	28	7	28	49	124	148	4
40	60	20	10	60	80	18	30	9	33	58	153	178	5
50	64	20	10	70	90	20	40	9	40	70	160	190	6
63	65	20	10	76	96	20	50	9	45	80	164	195	6

FEMALE HINGE  
**CHARNIERE FEMELLE**  
 CERNIERA FEMMINA



CODE MATERIAL / MATIÈRE / MATERIALE  
**AR4203 Ø** Steel / Acier / Acciaio

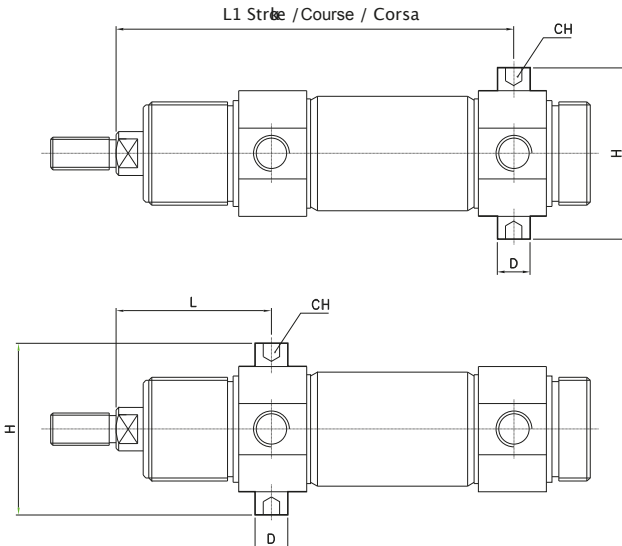


Ø	A	B	C	D	E	F	G	H	L	M	N	P	R	S	CH
32	58.1	38.1	20	10	50.1	35	24	125	47	121	40	7	12	4	13
40	70.1	46.1	28	12	60.1	40	30	146	57	143	50	9	13	5	17
50	86.1	57.1	36	14	74.1	45	34	158	62	154	54	9	14	6	19
63	100.1	70.1	42	16	88.1	50	35	161	63	160	65	9	16	6	19

PIVOTS FOR HINGE  
**AXE POUR ARTICULATION**  
 PERNI PER CERNIERA



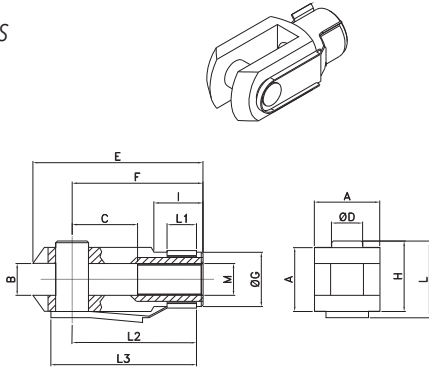
CODE MATERIAL / MATIÈRE / MATERIALE  
**AR4204 Ø** Steel / Acier / Acciaio



Ø	D	CH	H	L	L1
32	10	5	51	47	125
40	12	6	61	57	146
50	14	6	75	62	158
63	16	8	90	64	161

**YOKE WITH CLIPS**  
**CHAPE DE TIGE**  
 FORCELLA CON CLIPS

Material: Steel  
**Matière: Acier**  
 Materiale: Acciaio

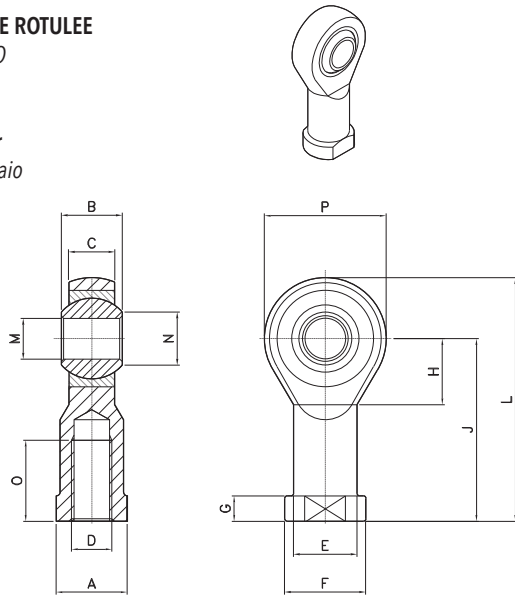


CODE	Ø
AR40673	32
AR40674	40
AR40675	50-63

Ø	A	B	C	D	E	F	G	H	I	M	L	L1	L2	L3
32	20	10	20	10	52	40	18	23	15	M10x1.25	26	10	39	46
40	24	12	24	12	62	48	20	28	18	M12x1.25	32	12	47	55
50-63	32	16	32	16	83	64	26	36	24	M16x1.5	40	14	62	72

**ROD ENDS**  
**CHAPE DE TIGE ROTULEE**  
 TESTA A SNODO

Material: Steel  
**Matière: Acier**  
 Materiale: Acciaio

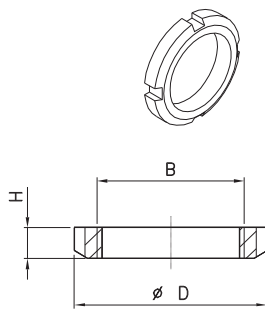


CODE	Ø
AR40660	32
AR40662	40
AR40665	50-63

Ø	A	B	C	D	E	F	G	H	J	L	M	N	O	P
32	17	14	10.5	M10x1.25	15	19	6.5	15	43	57	10	12.9	20	28
40	19	16	12	M12x1.25	17.5	22	6.5	17	50	66	12	15.4	22	32
50-63	22	21	15	M16x1.5	22	27	8	23	64	85	16	19.3	28	42

**NUT**  
**ECROU DE NEZ**  
 GHIERA

Material: Steel  
**Matière: Acier**  
 Materiale: Acciaio

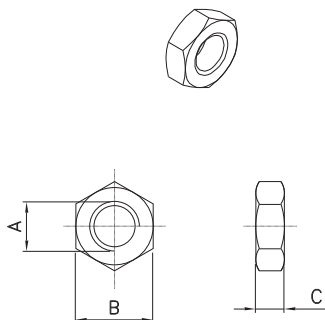


CODE	Ø
AR4205032	32
AR4205040	40
AR4205050	50-63

Ø	B	D	H
32	M30x1.5	45	7
40	M38x1.5	50	8
50	M45x1.5	58	9
63	M45x1.5	58	9

**NUT FOR ROD**  
**ECROU POUR TIGE**  
 DADO PER STELO

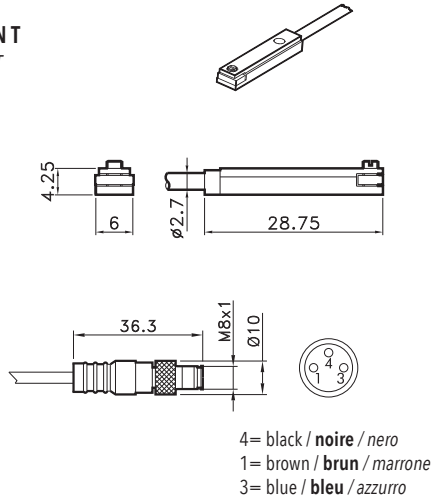
Material: Steel  
**Matière: Acier**  
 Materiale: Acciaio



CODE	Ø
DAD10x1.25	32
DAD12x1.25	40
DAD16x1.25	50-63

Ø	A	B	C
32	M10x1.25	17	8
40	M12x1.25	19	6
50-63	M16x1.5	22	6

T SWITCH  
**CAPTEUR EN T**  
 SENSORE AT

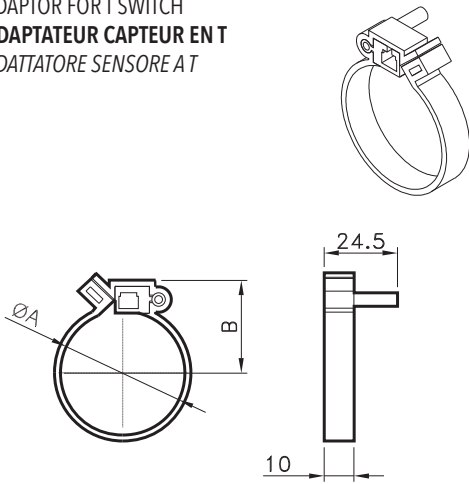


CODE

AR4023010	REED (MT.2,5) / <b>REED (MT.2,5)</b> / REED (MT.2,5)
AR4023020	HALL (MT.2,5) / <b>HALL (MT.2,5)</b> / HALL (MT.2,5)
AR4023110	REED + M8 (CM 30) / <b>REED + M8</b> / REED + M8 (CM 30)
AR4023120	HALL + M8 (CM 30) / <b>HALL + M8</b> / HALL + M8 (CM 30)

For technical data see page 1.74  
**Pour les données techniques, voir page 1.74**  
 Per i dati tecnici vedere pag. 1.74

ADAPTOR FOR T SWITCH  
**ADAPTEUR CAPTEUR EN T**  
 ADATTATORE SENSORE AT



CODE

AR4199 Ø

MATERIAL / **MATIÈRE** / MATERIALE

Plastic / **Plastique** / Plastica

Ø	A	B
32	33.6	27
40	41.6	31
50	52.4	37
63	65.4	42